



RECYCLING



GAME





Thank you
for your order!

I hope that you will enjoy using this printable material.

Please, remember that it is meant for *personal or educational use only*. Do not sell, modify or distribute through other websites. If you find it useful and want to share it with someone, send them a link to [Adventure in a Box!](https://www.adventure-in-a-box.com) I'll appreciate that very much.

If you experience a problem with this file, please let me know, and I will do my best to fix it. I also enjoy seeing my materials in use, so if you share it on social media, do tag me! My social media accounts are below.



[Visit our website](#) or [join our mailing list](#) to receive the latest updates on our projects and promotions! We have something new and fun happening every week.



All the best,

Liska

HOW TO PLAY THE RECYCLING GAME

The game consists of 6 waste sorting bins and 60 cards with pictures of items that we often find ourselves disposing of. The aim of the game is to determine whether they can be recycled or not.

Play it as a sorting game. Each player picks up a card and attempts to determine which bin it should be placed in. If the answer is correct, the player scores a point. In the end of the game, the player with the most points wins.

SIMPLE VARIANT

Play with only two bins (page 6) — household waste and recyclables.

ADVANCED VARIANT

Instead of one recycling bin, use several bins: paper, glass, compost, etc. (page 7)

It is important to remember that every municipality has different rules for recycling and a different number of bins. It is a good idea to look into your local rules of recycling and play the game with them in mind.

However, if the players come from different locations or no specific rules can be found for your neighborhood, a general answer key is included. It is based on trends in some communities but may not be universally applicable.

IMPORTANT CONSIDERATION!

A fact that is not repeated on the item entries but bears mentioning is that empty food containers should always be recycled in a clean condition. This applies to how toothpaste tubes, oil bottles, milk cartons etc. should be recycled—not just empty, but also washed.

ALPHABET LIST OF ITEMS IN THE GAME

Aerosol Can: If empty, it can be recycled with metal. If not, it should be disposed of at a special location.

Alkaline Battery: Recycled at special locations.

Apple Core: Recycled with compost.

Baby Powder Bottle: Recycled with plastic.

Banana Peel: Recycled with compost.

Bone: Recycled with compost.

Branch: Recycled with compost.

Broken CD: Recycled at special locations.

Broken Glass Bottle: Household waste.

Broken Glass Plate: Household waste.

Broken Pan: Household waste.

Broken Phone: Recycled at special locations.

Broken Shovel: Household waste.

Brown Paper Bag: Recycled with paper.

Candy Wrap: Recycled with paper.

Cans: Recycled with metal.

Cardboard Box: Recycled with paper.

CD Case: Can be recycled with plastic.

Coconut Shell: Recycled with compost.

Corn Cob: Recycled with compost.

Cream Tubes: Can be recycled with plastic.

Diaper: Household waste.

Dry Leaf: Recycled with compost.

Egg Shell: Recycled with compost.

Empty tin: Recycled with metal.

Envelope: Recycled with paper.

Expired Medicine: Recycled at special locations.

Fluorescent Bulbs: Recycled at special locations as hazardous material.

Gift Box: Recycled with paper.

Glasses: Household waste.

Glass Oil Bottle: Recycled with glass.

Incandescent Bulbs: Household waste. Cannot be recycled because of the fine wires inside the bulb.

Jar: Recycled with glass.

Metal Bottle Cap: Household waste.

Milk Carton: Recycled with plastic.

Newspaper: Recycled with paper.

Nut Shell: Recycled with compost.

Old Magazines: Recycled with paper.

Old Toy: Household waste if cannot be donated.

Paper Egg Carton: Recycled with paper or compost.

Paper Gift Bag: Recycled with paper.

Peanut Butter Jar: Recycled with plastic.

Pizza Box: Household waste. Cannot be recycled because of grease contaminating paper.

Plastic Bottle: Recycled with plastic.

Plastic Cup: Recycled with plastic.

Plastic Hangers: Household waste.

Plastic Shrink Wrap: Recycled with plastic.

Pop Can: Recycled with metal.

Sketchbook: Recycled with paper.

Scrap of Paper: Recycled with paper.

Shopping Bag: Recycled with plastic.

Soiled Tissue: Household waste.

Soiled Paper Towel: Household waste.

Spoiled Food: Recycled with compost.

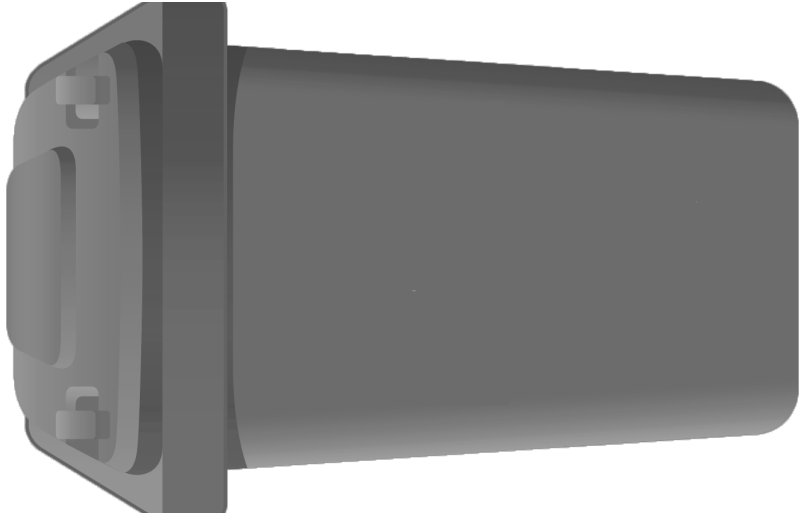
Stained Old Clothes: Recycled at special locations.

Styrofoam Container: Household waste.

Styrofoam Egg Container: Household waste.

Torn Ball: Household waste.

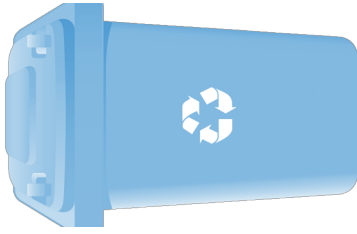
Toothpaste Tube: Recycled with plastic.



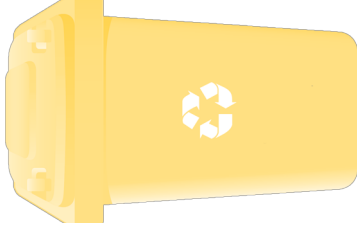
Household Waste



Recycling Bin



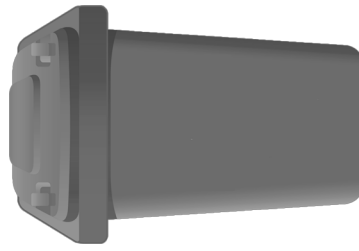
Metal Bin



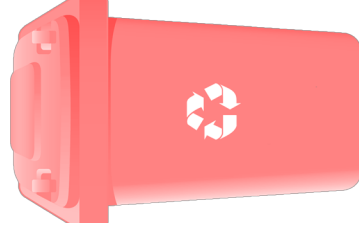
Paper Bin



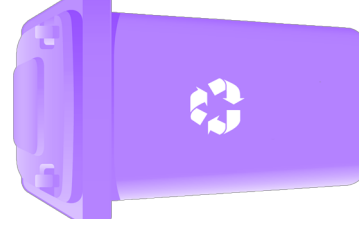
Plastic Bin



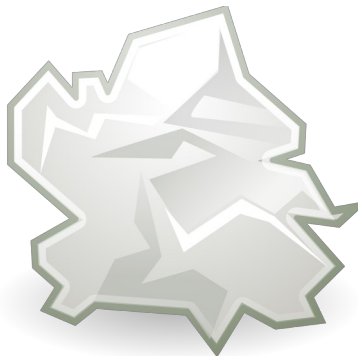
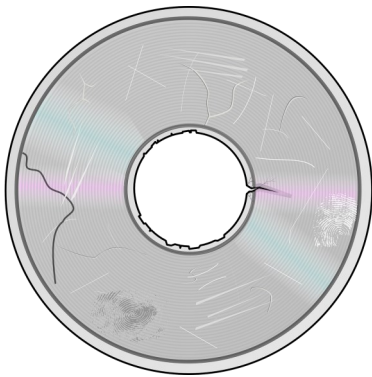
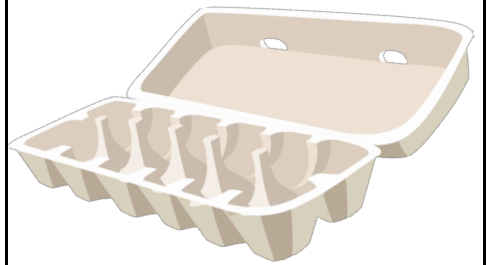
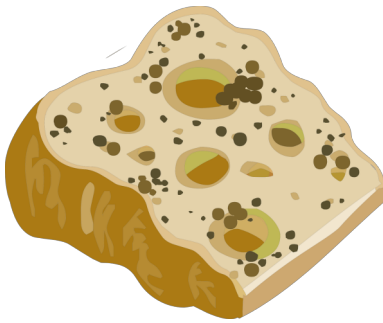
Household Waste

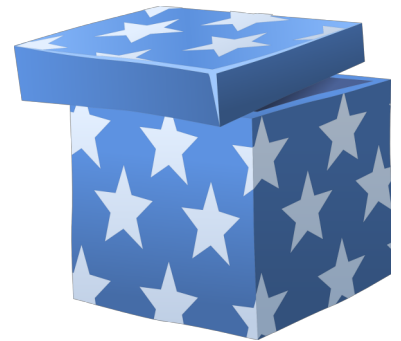
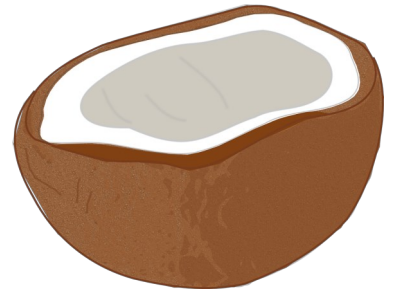
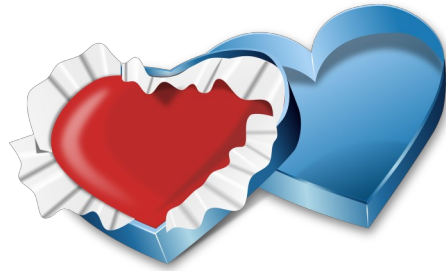


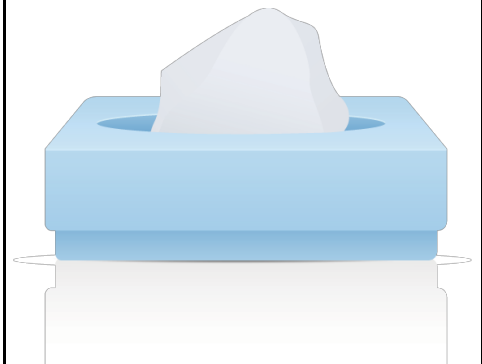
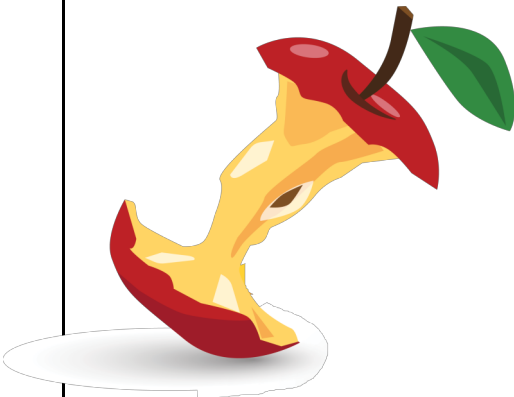
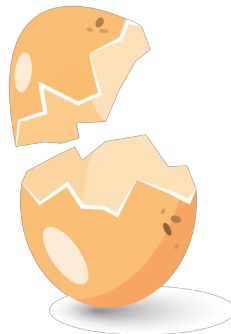
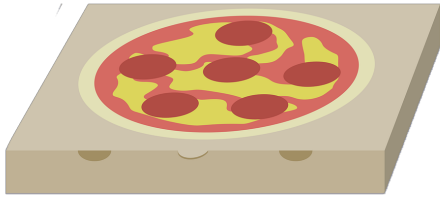
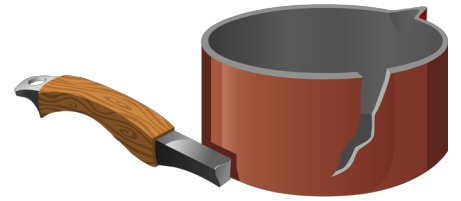
Special Recycling Required

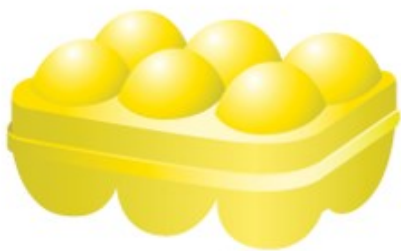
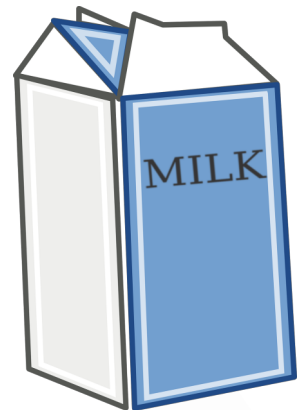


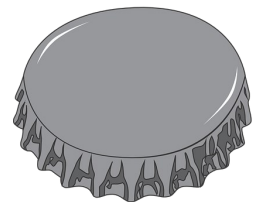
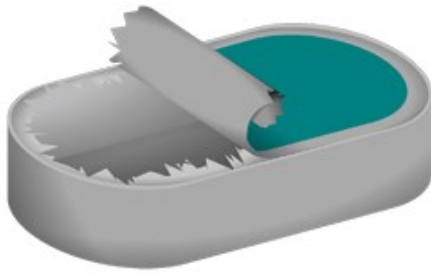
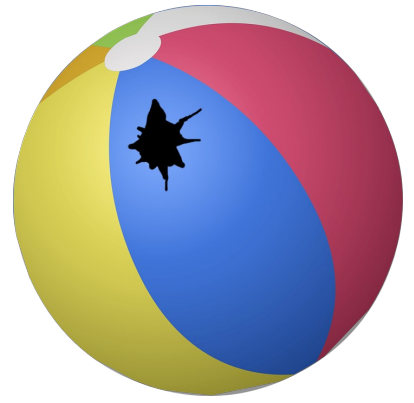
Glass Bin













Aerosol Can



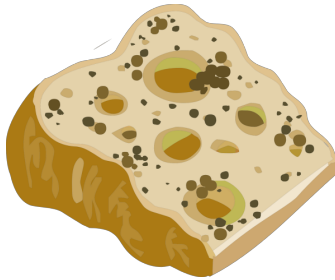
Incandescent Light Bulb



Brown Paper Bag



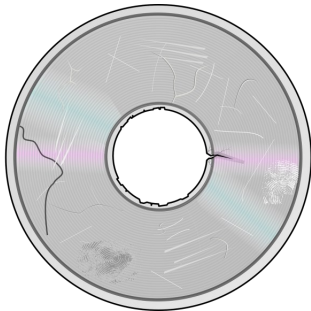
Alkaline Battery



Spoiled Food



Paper Egg Carton



Broken CD



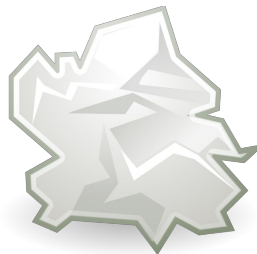
Dry Leaf



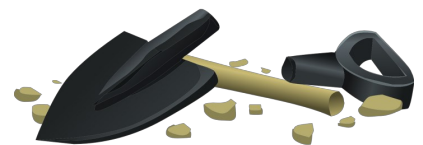
Newspaper



Plastic Cup



Scrap of Paper



Broken Shovel



Paper Gift Bag



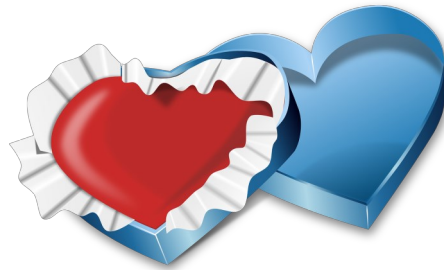
Bone



Plastic Bottle



Sketchbook



Candy Wrap



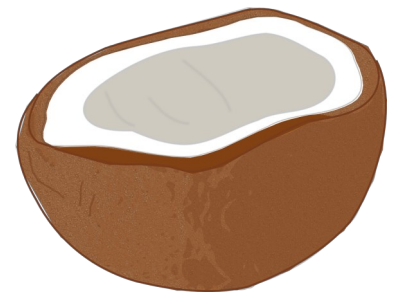
Cardboard Box



Jar



Cans



Coconut Shell



Corn Cob



Baby Powder Bottle



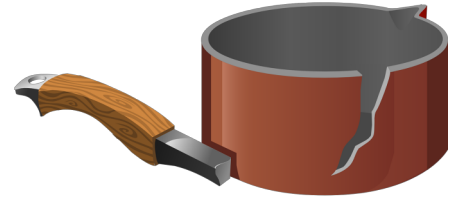
Gift Box



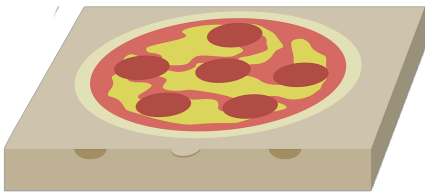
Old Magazines



Expired Medicine



Broken Pan



Pizza Box



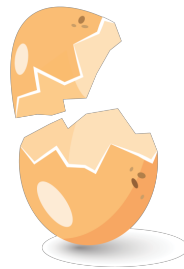
Soiled Paper Towel



Envelope



Broken Branch



Egg Shell



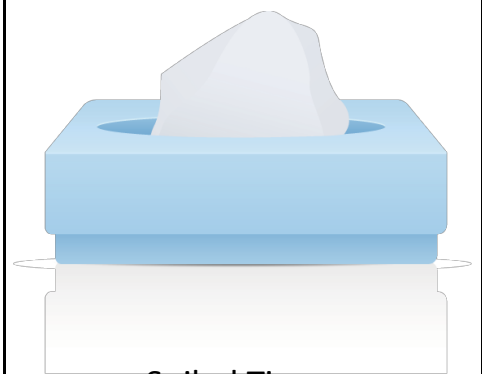
Banana Peel



Apple Core



Peanut Butter Jar



Soiled Tissue



Stained Old Clothes



Shopping Bag



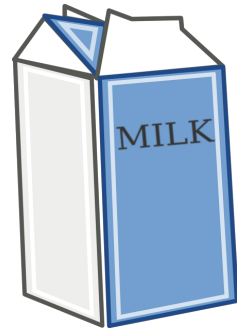
Plastic Hangers



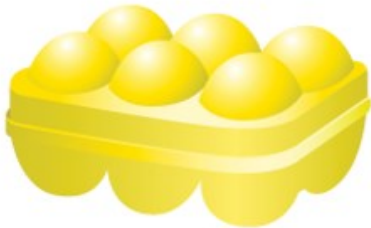
Styrofoam Container



Broken Phone



Milk Carton



Styrofoam Egg Container



Toothpaste Tube



Broken Glass Bottle



Plastic Shrink Wrap



Nut Shell



Diaper



Pop Can



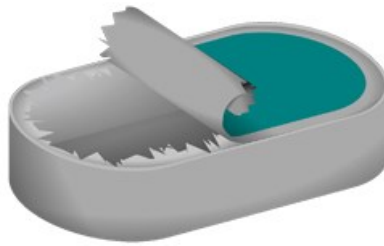
Fluorescent Light Bulb



Torn Ball



Glasses



Empty Tin



Bottle with Poison



Cream Tubes



CD Case



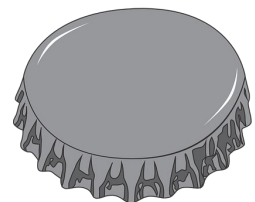
Old Toy



Broken Glass Plate



Glass Oil Bottle



Metal Bottle Cap